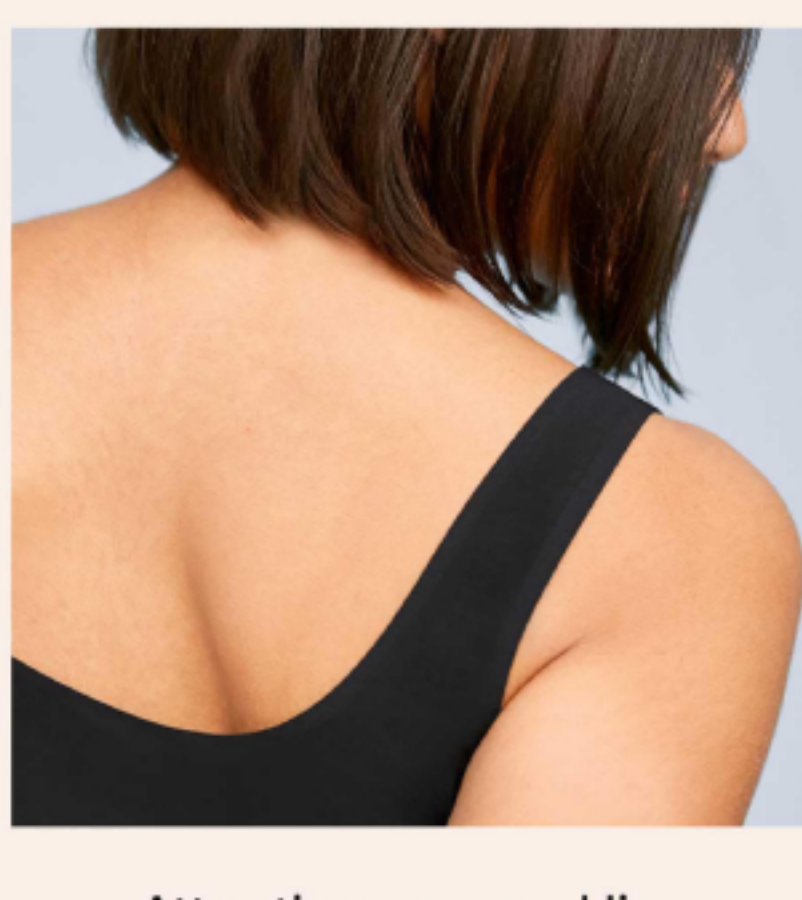


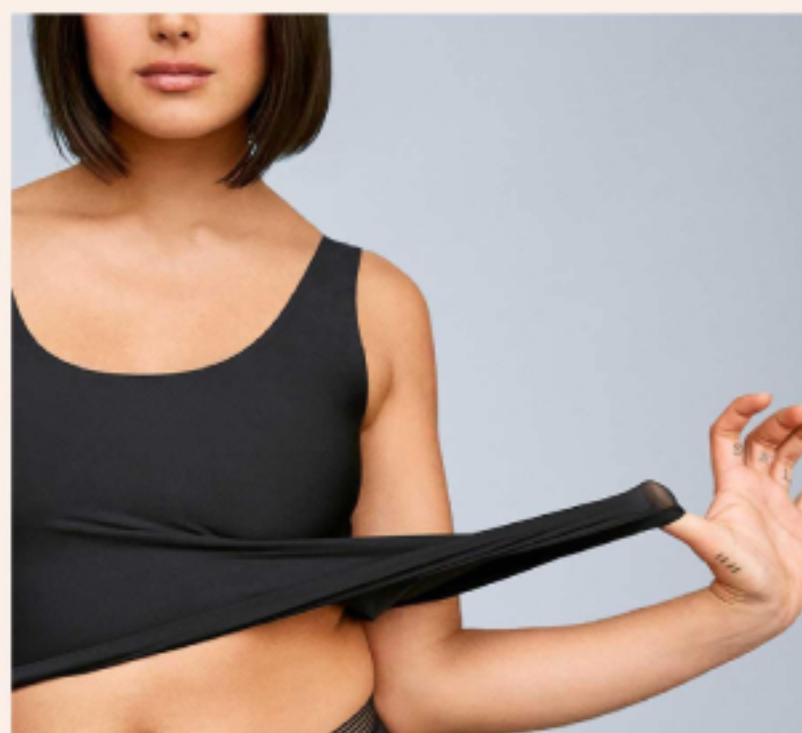
Your New Wardrobe Staple



Attractive scoop neckline
in the front and back.



Stitch-free construction
for a smooth fit.



Second-skin fabric for
year-round wear.

[Shop Cami](#)

THIRDLOVE



Stone Cold Gorgeous

[Shop Eyelet Lace](#)

The limited edition Eyelet
Lace Balconette is here in Jade.

Available in 32C.



Eyelet Lace Balconette

[Shop Now](#)



Eyelet Lace Cheeky

THIRDLOVE

Prepare for Out of Office

The bras our favorite influencers are packing.

[Shop Now](#)



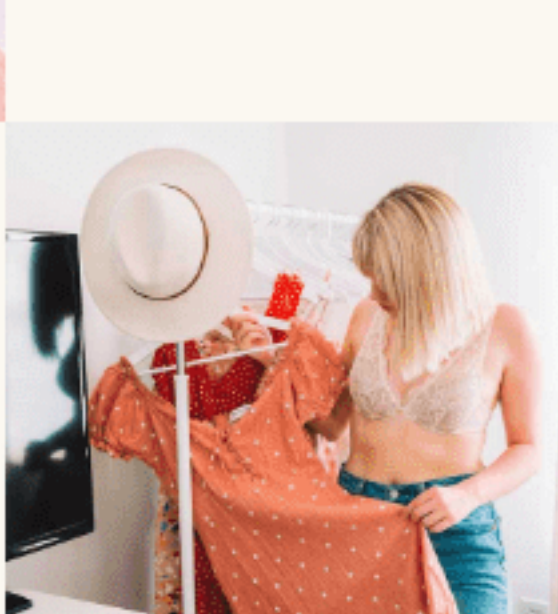
@WANDERABODE



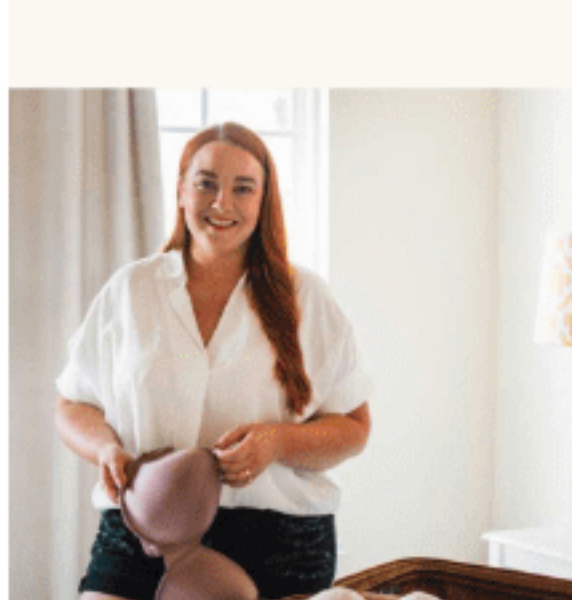
[Shop Strapless](#)



[Shop Plunge](#)



@MADDY.CORBIN



@LOLO_RUSSELL



[Shop T-Shirt](#)

For Bras That Are
Getaway Ready

[Read On](#)